

# Update on Gilead's HIV Prevention Trials

Moupali Das, MD, MPH

Executive Director, Virology Therapeutic Area

PrEP Project Team Lead

# NOTICE AND DISCLAIMER

This is an informational presentation and is not intended to be promotional.

Copyright in these presentations is owned by Gilead Sciences, Inc.



# As the HIV epidemic continues, treatment and prevention goals have evolved

1997



Single tablet regimen

2006–Today






Long-acting agents for treatment and prevention to end the epidemic  
Address adherence, person-responsive options, expand populations, aging

Future



# Current Challenges in PrEP Clinical Trial Design

Trial Design	Feasibility?
Superiority to placebo	 Unethical
Active-controlled Non-Inferiority	 Large N, long duration delays development
Counterfactual background HIV incidence	



**Unique  
Aspects of the  
Adolescent Girls &  
Young Women  
(AGYW) PrEP  
Trial**

**Robust community and stakeholder engagement  
prior to study development and through dissemination**

**Intentional inclusion of pregnant and  
lactating women and adolescents**

**Participant-focused products and  
procedures**

**Counterfactual HIV  
incidence design**

# Repeated and committed community engagement



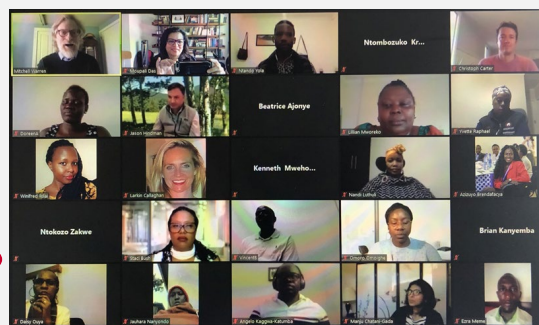
- Enpaneled G-CAG
  - Established meeting frequency
  - Established subcommittee to review study documents
  - Represents global individuals including South Africa, Uganda, USA
- Will follow same steps for MSM/trans study

**AVAC** AVAC-sponsored meeting New York, USA

**SA & Ugandan Advocates**

**AVAC**

**AVAC**



# Inclusion of pregnant women and adolescents in clinical trials

 PHASES  
PREGNANCY + HIV/AIDS  
SEEKING EQUITABLE STUDY

**Ending the evidence gap  
for pregnant women  
around HIV & co-infections:**

**A CALL TO ACTION**

The PHASES Working Group  
Pregnancy and HIV/AIDS: Seeking Equitable Study

issued July 2020



ACCP Position Paper

## **Inclusion of Adolescents With Adults in Phase 3 Clinical Trials: Overview of the Current State and a Call for Action**

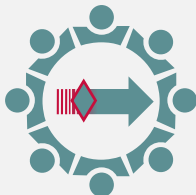
The Journal of Clinical Pharmacology  
2020, 60(5) 559–562  
© 2020, The American College of  
Clinical Pharmacology  
DOI: 10.1002/jcph.1591

**Mohamed-Eslam F. Mohamed, RPh, PhD<sup>1,2</sup> , Natella Rakhmanina, MD, PhD, FCP<sup>3,4</sup>,  
and Hazem E. Hassan, RPh, MS, PhD<sup>1</sup>**



# Gilead's commitment to participant-centered trial design

Design Phase: Upstream participant-centric initiatives



Trial Execution Phase: Focus on inclusivity, accessibility, and retention



Communication throughout trial via multiple channels

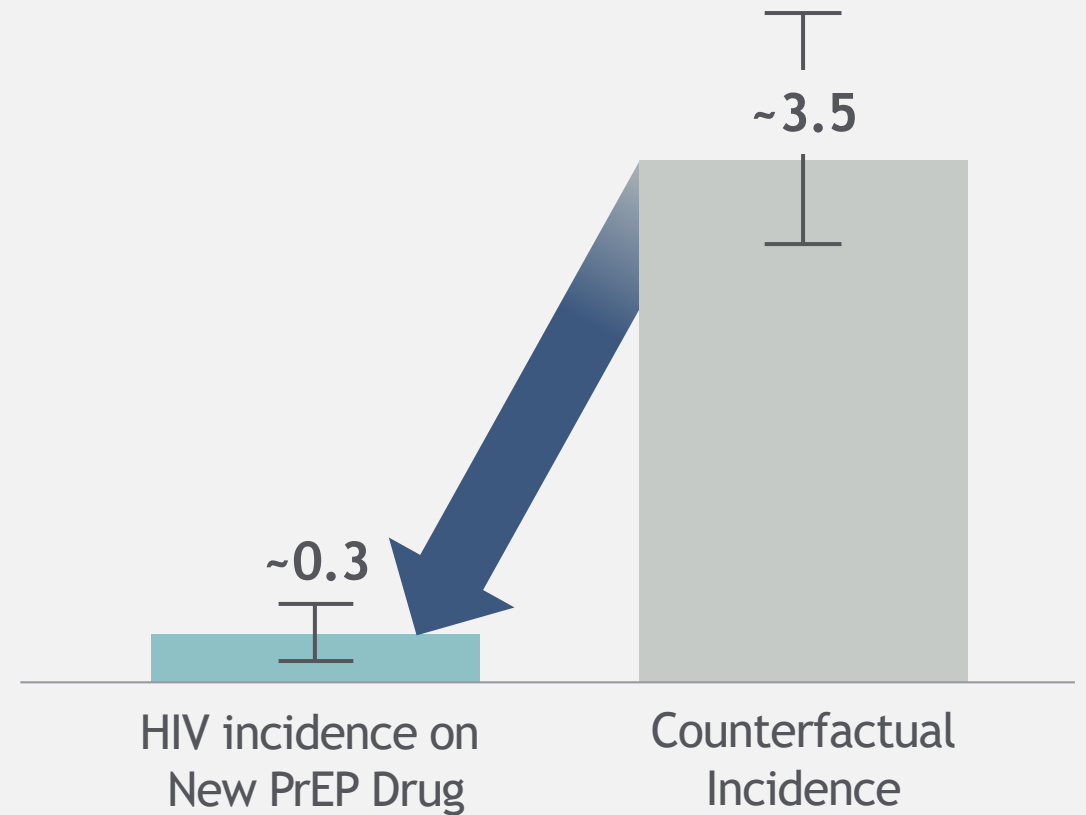
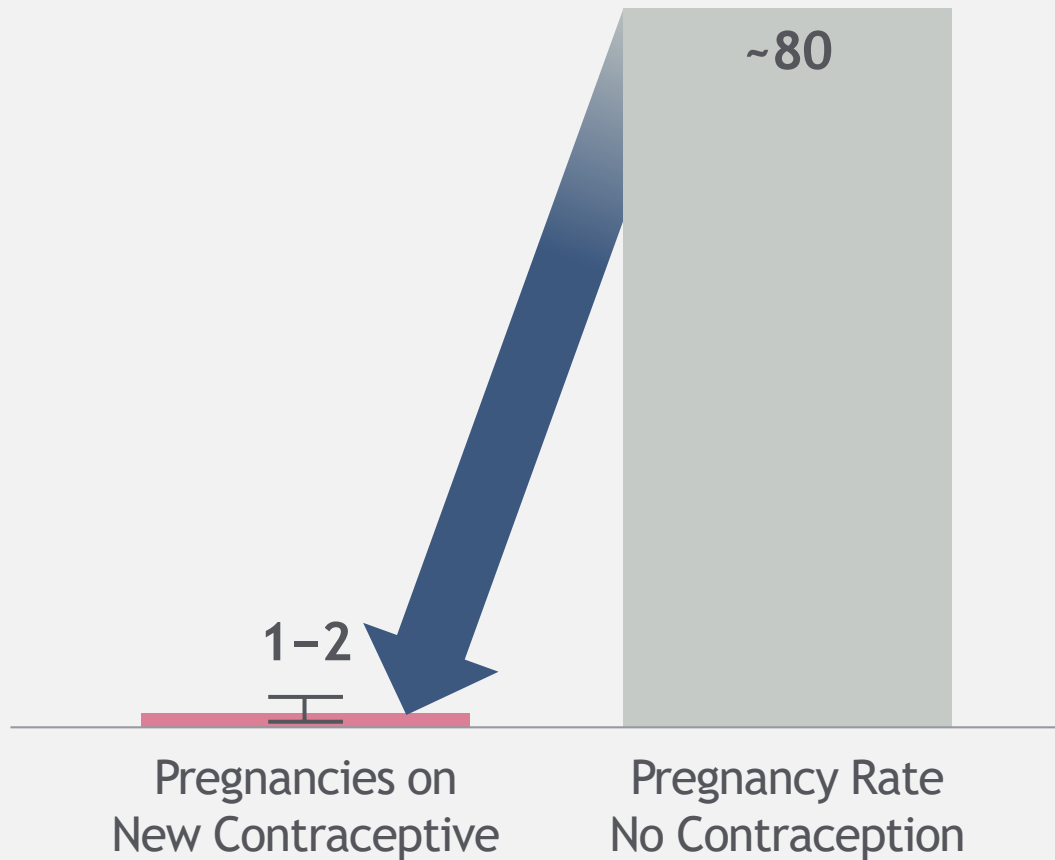




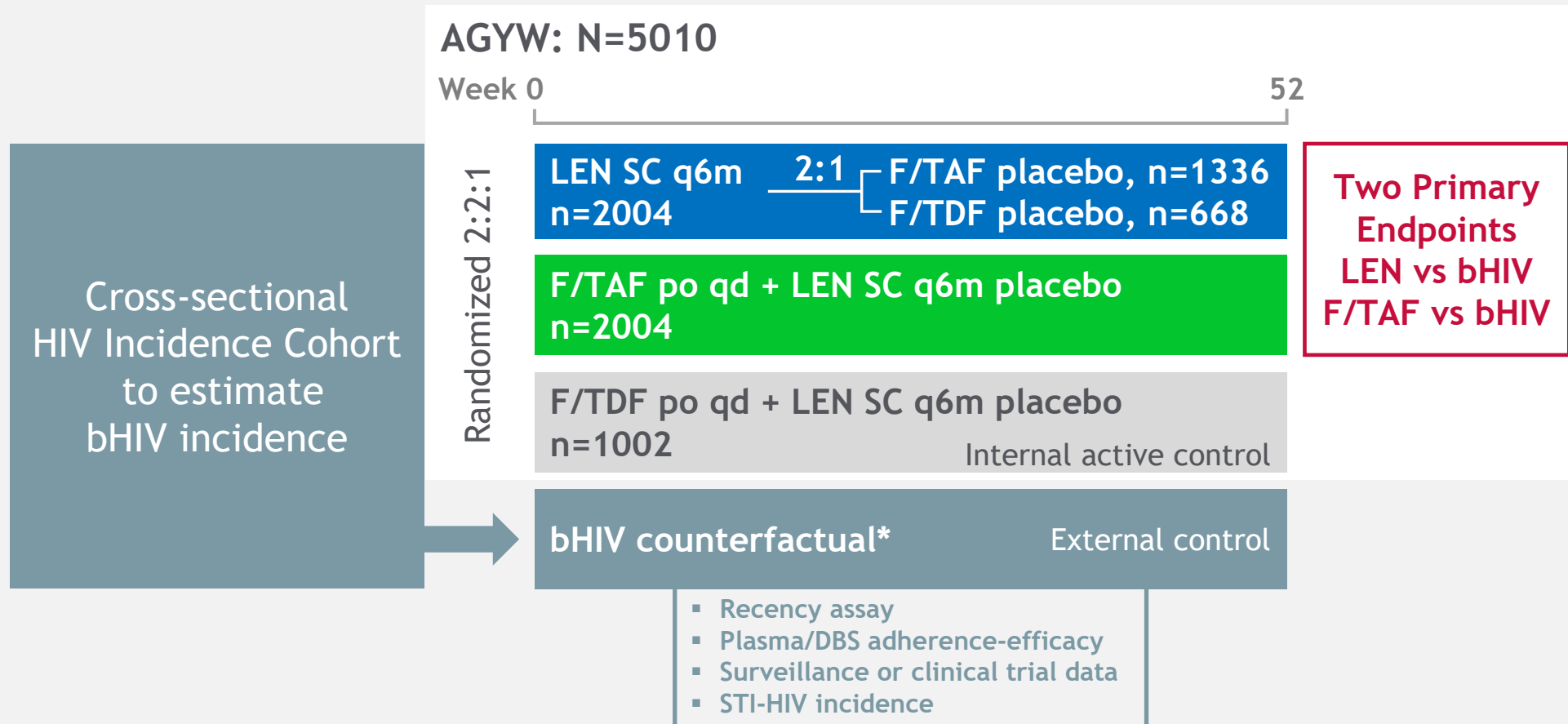
# Novel HIV counterfactual incidence design

Pearl Index: Pregnancies/100 PY

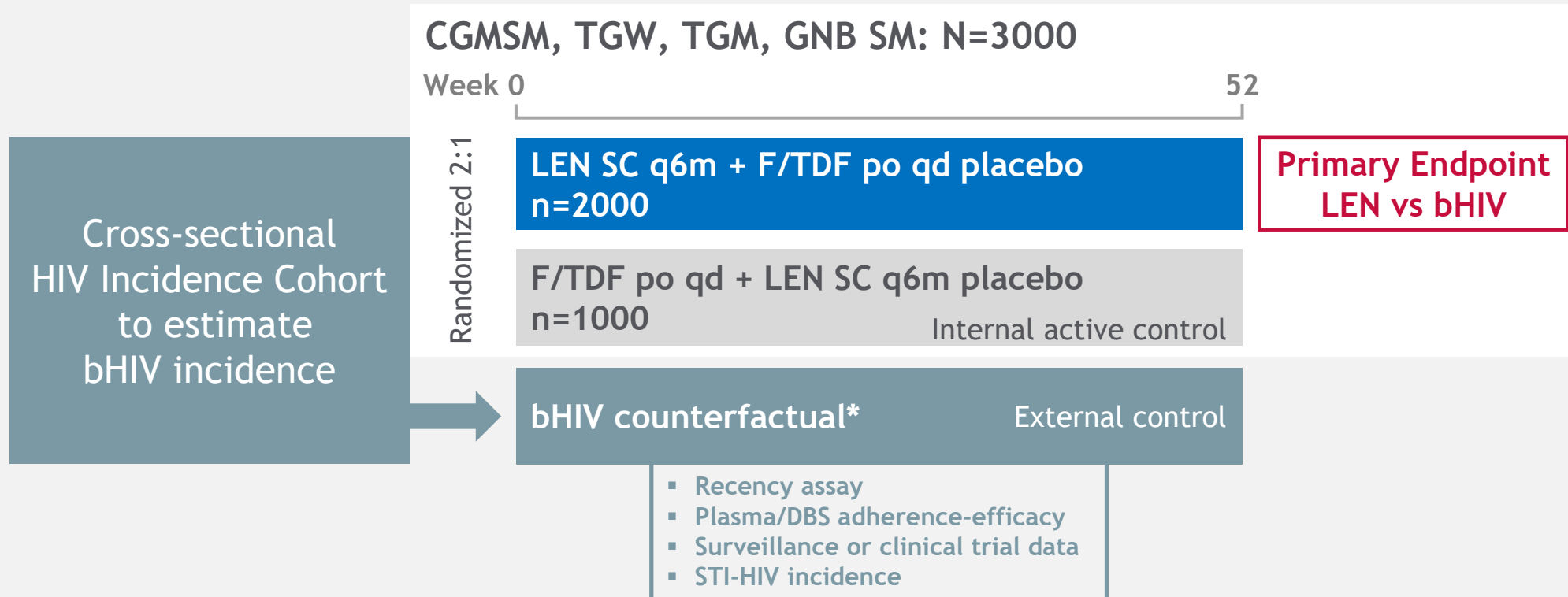
HIV Counterfactual: HIV cases/100 PY



# Design to evaluate efficacy & safety of LEN and F/TAF for PrEP in AGYW



# Design to evaluate efficacy & safety of LEN and F/TDF for PrEP in CGMSM, TGW, TGM, GNB



# Operational Challenges for HIV Counterfactual

- **Cross-sectional HIV incidence cohort** will require a change in how clinics screen for HIV
- **Pre-screening** will bias bHIV incidence to be too low
- **Recent HIV testing** drives to low bHIV, but frequent testing is recommended for persons at risk
  - Require documentation of timing of recent test?
  - Exclude persons who've tested within the MDRI of the recency assay?
- **Persons already prescribed PrEP** will have lower bHIV but have characteristics similar to desired enrolled population and may desire to contribute to finding new prevention options
- **Continuing screening for bHIV** once randomized cohort accrued could improve bHIV precision but adds complexity about what the next steps for those who screen would be



# Statistical challenges with the recency assay, algorithm, and analysis

- Recency assay and algorithm specific considerations
  - Which assay, which MDRI, FRR
  - Do we use the viral load cut-off and if so, what value
  - Do we look for ART drug levels
  - Do we weight based on sub-type or use overall summaries
  - HIV incidence, prevalence, community viral load in different geographies (prevalent viremia vs proportion suppressed?)
- Analysis of Primary and Secondary Endpoint considerations
- Totality of evidence including animal models and PK/PD, safety, and efficacy from HIV treatment



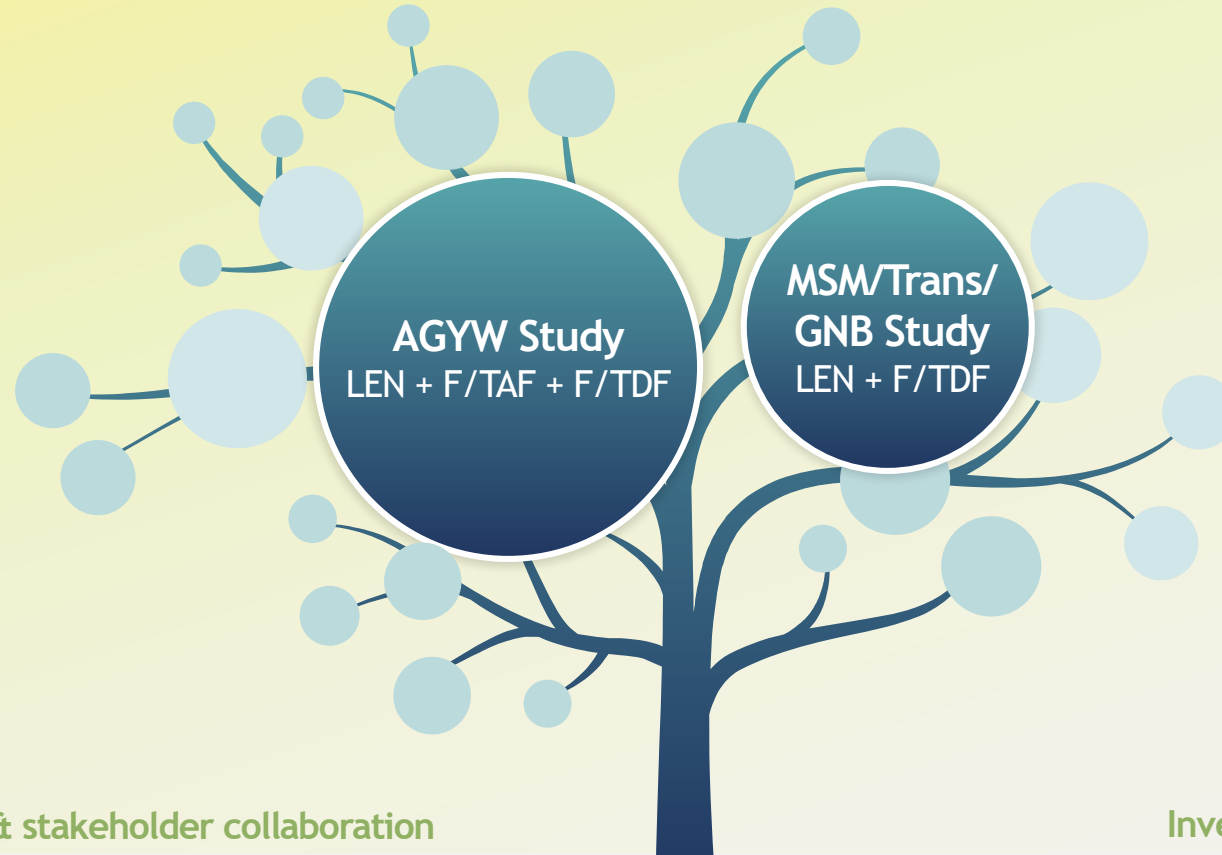
# Despite challenges, important to have path forward

- We are optimistic that the counterfactual HIV incidence design can be both scientifically rigorous and ethically responsive
- Recency-based counterfactual calculations offer **high statistical power**; triangulating complementary counterfactual data can be reinforcing
- We'd like to consider ways to **collaborate** on recency-based counterfactual estimates, including a shared database
- We **strongly support a consensus statement** to align all partners on the range of options for operationalization, assay choice, and algorithm specifics



# Gilead new PrEP drug development program: Clinical trials for HIV prevention

Collaboration  
Transparency



Community & stakeholder collaboration

Investigator engagement

Robust Pharmacokinetic and Safety Database in persons with and without HIV

Phase 1 Studies

LEN Mucosal Pk

 Capella

Highly treatment  
experienced

 Calibrate

Antiretroviral  
naïve